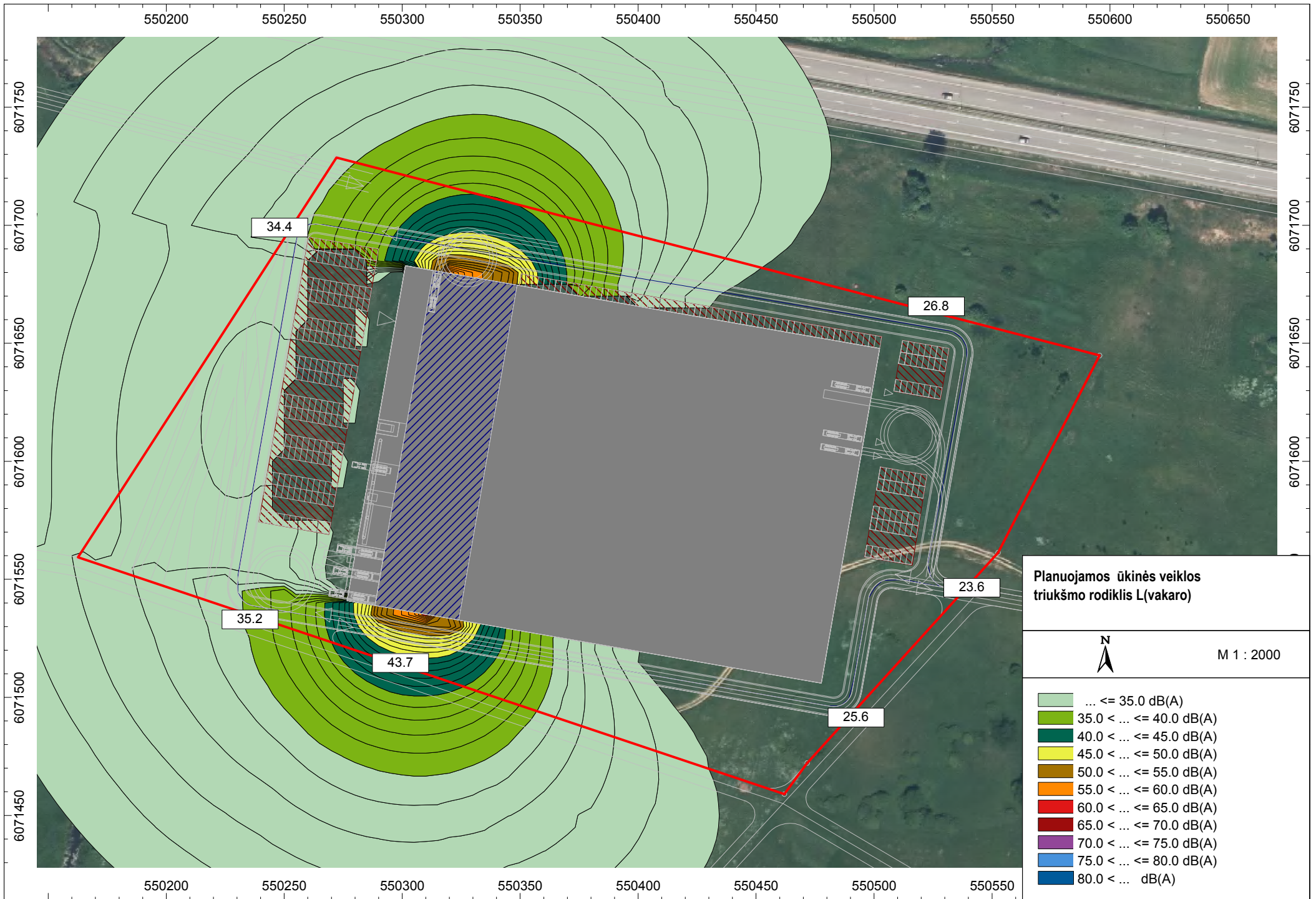


Planuojamos ūkinės veiklos triukšmo rodiklis L(dienos)



M 1 : 2000

- ... ≤ 35.0 dB(A)
- 35.0 < ... ≤ 40.0 dB(A)
- 40.0 < ... ≤ 45.0 dB(A)
- 45.0 < ... ≤ 50.0 dB(A)
- 50.0 < ... ≤ 55.0 dB(A)
- 55.0 < ... ≤ 60.0 dB(A)
- 60.0 < ... ≤ 65.0 dB(A)
- 65.0 < ... ≤ 70.0 dB(A)
- 70.0 < ... ≤ 75.0 dB(A)
- 75.0 < ... ≤ 80.0 dB(A)
- 80.0 < ... dB(A)



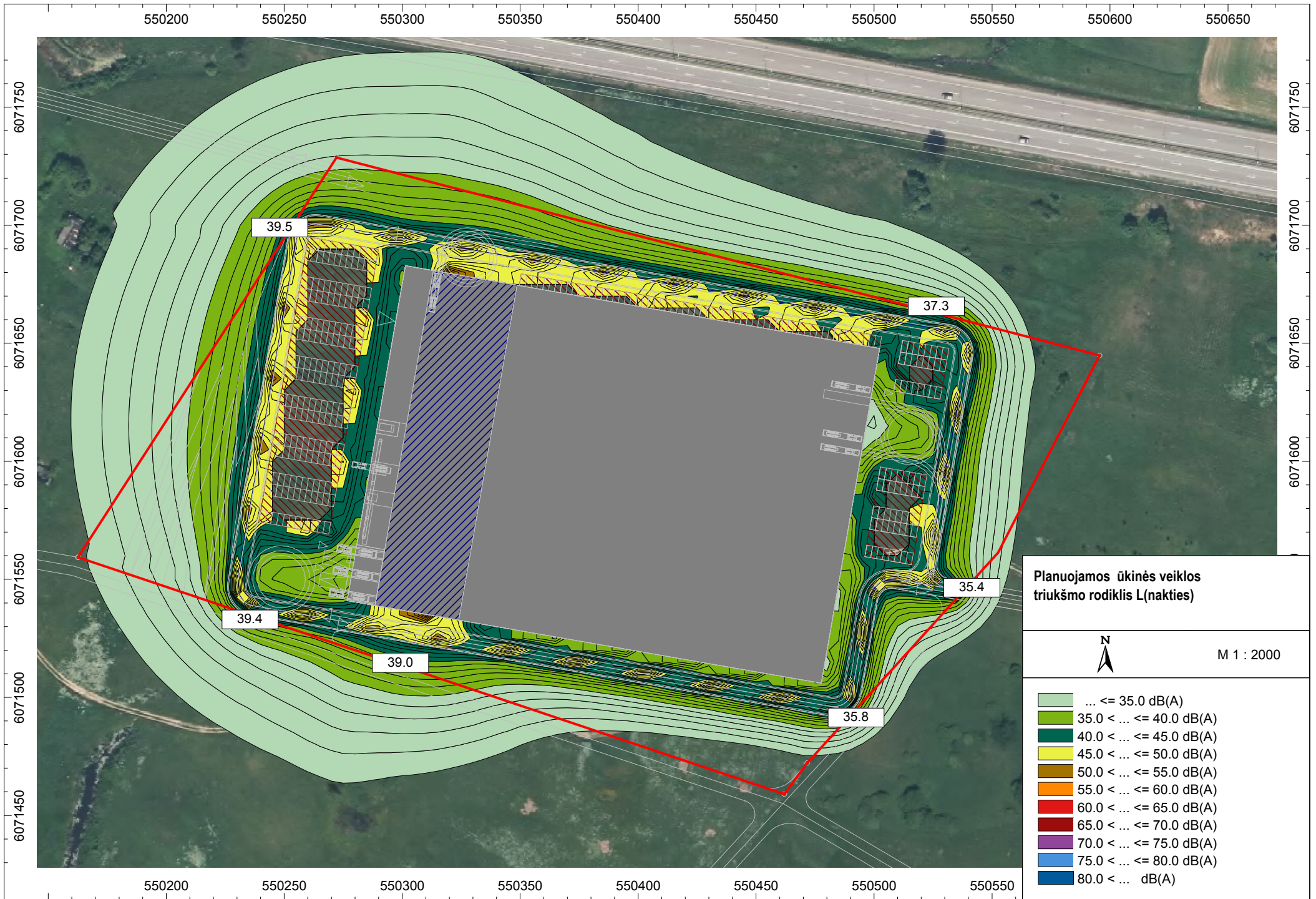
**Planuojamos ūkinės veiklos triukšmo rodiklis L(vakaro)**



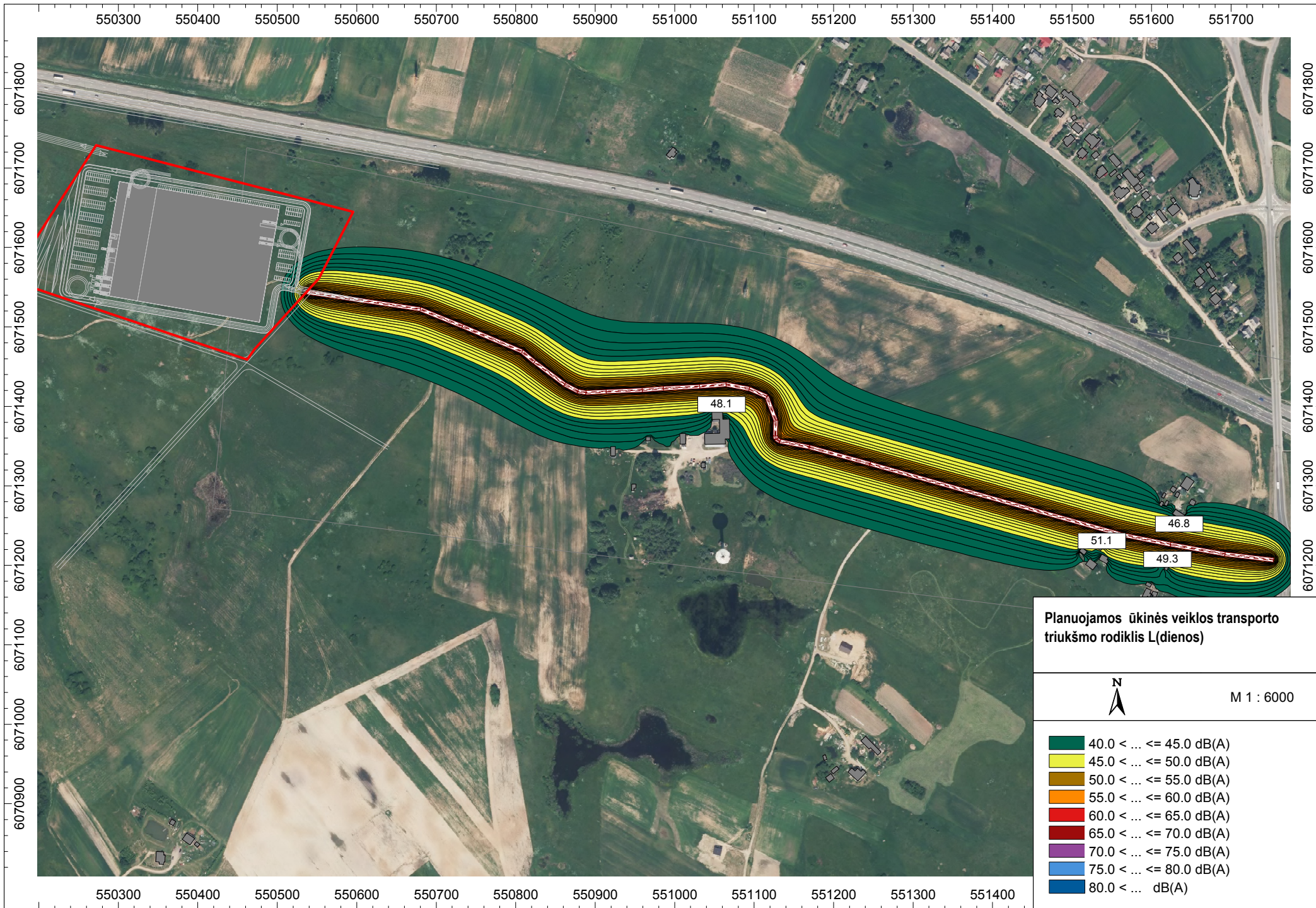
M 1 : 2000

...	... ≤ 35.0 dB(A)
...	35.0 < ... ≤ 40.0 dB(A)
...	40.0 < ... ≤ 45.0 dB(A)
...	45.0 < ... ≤ 50.0 dB(A)
...	50.0 < ... ≤ 55.0 dB(A)
...	55.0 < ... ≤ 60.0 dB(A)
...	60.0 < ... ≤ 65.0 dB(A)
...	65.0 < ... ≤ 70.0 dB(A)
...	70.0 < ... ≤ 75.0 dB(A)
...	75.0 < ... ≤ 80.0 dB(A)
...	80.0 < ... dB(A)

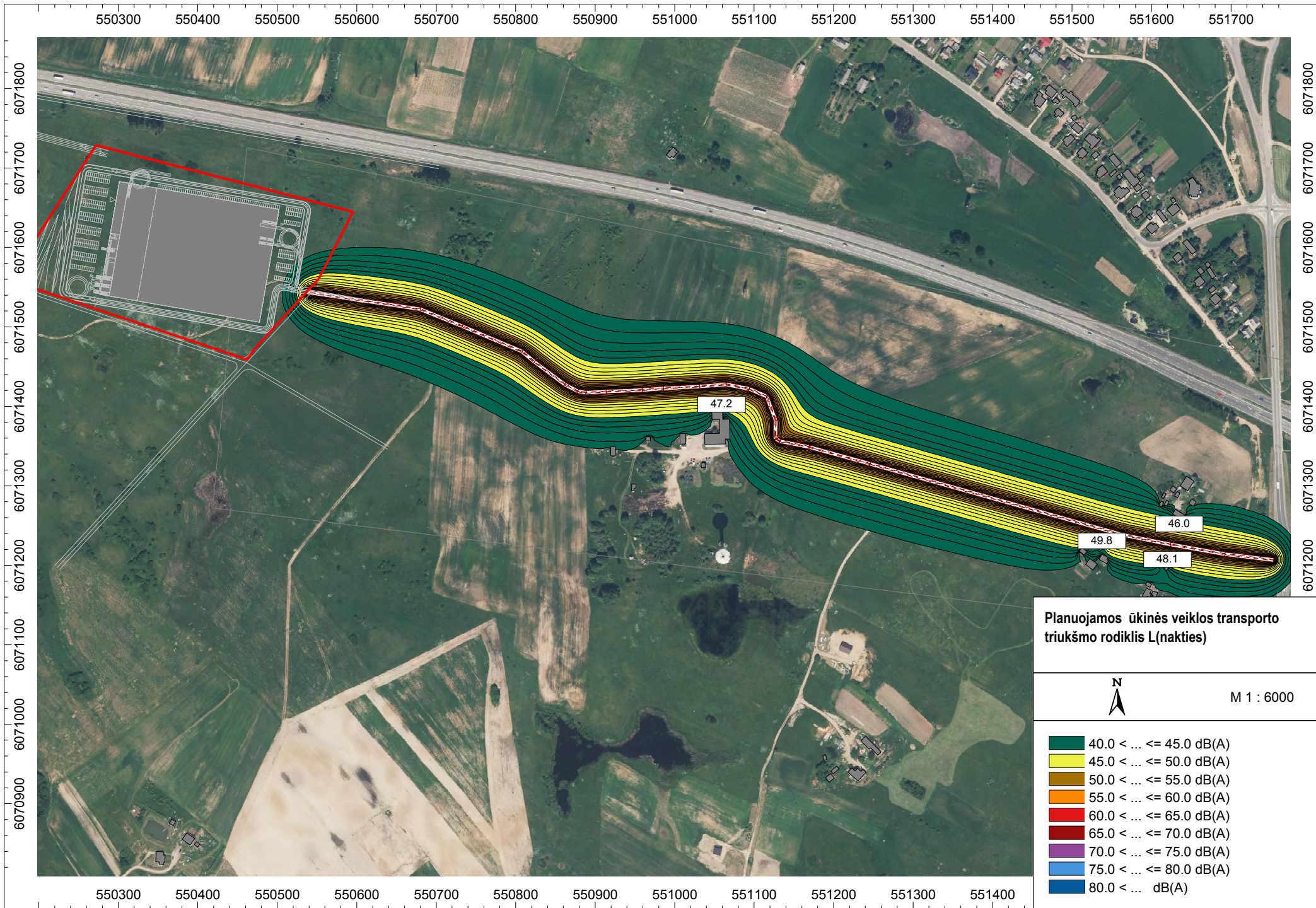












550300 550400 550500 550600 550700 550800 550900 551000 551100 551200 551300 551400 551500 551600 551700

6071800  
6071700  
6071600  
6071500  
6071400  
6071300  
6071200  
6071100  
6071000  
6070900

6071800  
6071700  
6071600  
6071500  
6071400  
6071300  
6071200

550300 550400 550500 550600 550700 550800 550900 551000 551100 551200 551300 551400